

➤ Data Replication

Replicate filesystem data to another machine creating a hot standby for failover.

➤ Fast Mirror

Mirror any folders between machines with special Pause, Reverse and Resume capabilities.

➤ Changed-Byte Awareness

Constant monitor of bytes and block structures allows for instant replication transfer of granular byte-level data.

➤ Network Optimized

Bandwidth throttling via default or scheduled settings, network compression and tolerant cache to help for bandwidth traffic.

➤ Targeted Data

Replicate only specific data and select exceptions to avoid transfer of unnecessary data.

➤ Replication Types

Synchronous, Asynchronous and Asynchronous Journalled replication are all supported.

➤ Reduced Usage

Allows the transmission line to be used simultaneously with other applications that may exist in the environment.



Next-Generation Replication and Mirror

Data growth is top of mind for any storage administrator or CIO. While cost of storage decreases, the need to have more recovery and restore options to augment backup, archive and disaster recovery becomes more severe. Fortunately, the cost to data replicate for off site recovery is now within reach.



Real-Time Capture

AIMstor from Cofio provides real-time Replication for Windows file and application servers such as SQL and Exchange, or for standard file and web servers.

AIMstor uses file level replication at the changed block level, constantly monitoring the source data so you have your target copy always consistent.

Targeted Data

Getting the right data replicated is often impossible with legacy replication products that use volume replication.

Quick data classification helps keep your transfers free from temp files and other unneeded data, allowing you to select your data based on type, application, ownership or other factors. You can even create multiple replication policies that each handle only certain types of data, such as virtual machines in HyperV or VMware.



Workflow and Dataflow

To make all of this work easily and to set it up quickly, AIMstor provides a Workflow User Interface that gives you the power to set the data flow and replication policies per your exact needs.

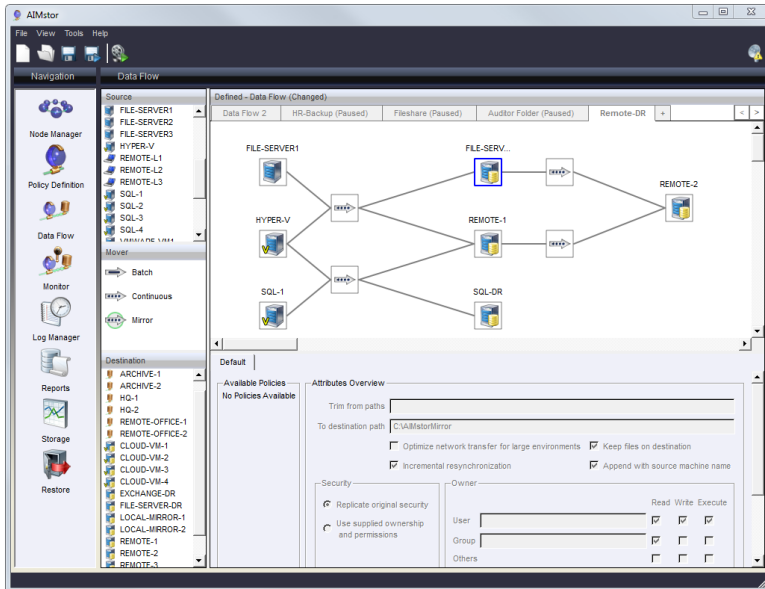
Distributed Architecture

Unlike legacy products that work in client / server architecture, AIMstor has a completely distributed architecture. AIMstor allows you to easily scale by enabling your machines to be self managing per their policy requirements.



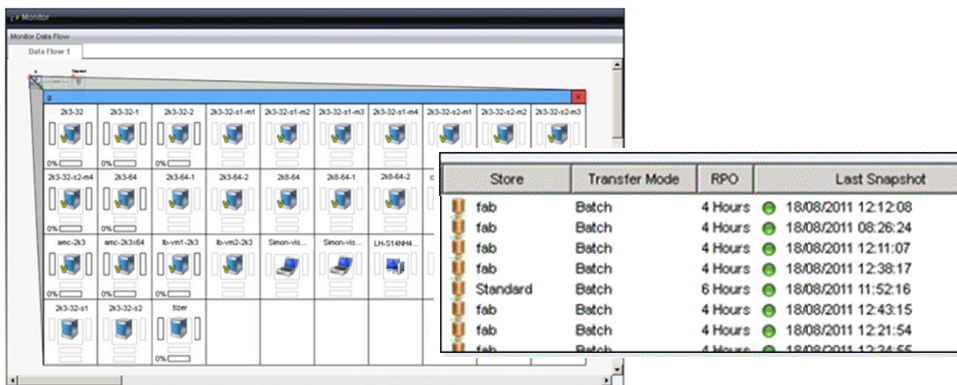
Flexible Topology

Setting up your AIMstor replication topology is as easy as dragging and dropping your servers, groups and replication targets into the dataflow interface. Many-to-One, One-to-Many, Many-to-Many, One-to-One, LAN or WAN, you have the flexibility to create any local or remote design.



Monitor & Reports

Monitor in real-time any specific policy or job, showing machines, groups and VMs in their natural data flow and with full details on data transfers.

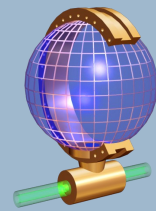


Replicate and Unify

If you need more than replication, AIMstor offers the option of using the same data stream that travels over your network to be saved in snapshot form for backup and CDP. These point in time snapshots can be restored instantly with no re-hydration requirements. Simply select and restore to any machine. CDP, backup and file versioning can also be part of the same policy as replication, to target the same data.

Learn More

AIMstor Movies and Documents can be downloaded directly from the Cofio Website at: <http://www.cofio.com/documents>



➤ Application support

Easily provide real-time replication of Windows applications such as:

- MS SQL
- MS Exchange
- Hyper-V

➤ Remote Offices

Mixing other data protection capabilities within remote offices makes AIMstor replication even more powerful.

➤ Fully featured

- Centralized Control
- Email notification
- Backup report
- Advanced Reporting
- User-level Restores
- Self-Managing Clients
- Secure SSL Encryption

➤ Unified Stream

Use the same replication stream at your target for CDP, Backup or Versioning with AIMstor's unified deduplicated repository.

➤ Platform Support

- Windows 2003
- Windows 2008
- Windows 2008R2
- Windows 7
- Windows Vista
- Windows XP

